

# Andhra Pradesh State Council of Higher Education

**Notations :**

- 1.Options shown in green color and with ✓ icon are correct.
- 2.Options shown in red color and with ✘ icon are incorrect.

<b>Question Paper Name :</b>	PY2
<b>Subject Name :</b>	Pharmacy
<b>Creation Date :</b>	2025-06-06 12:57:12
<b>Duration :</b>	120
<b>Total Marks :</b>	120
<b>Display Marks:</b>	No
<b>Share Answer Key With Delivery Engine :</b>	Yes
<b>Change Font Color :</b>	No
<b>Change Background Color :</b>	No
<b>Change Theme :</b>	No
<b>Help Button :</b>	No
<b>Show Reports :</b>	No
<b>Show Progress Bar :</b>	No

## Pharmacy

<b>Group Number :</b>	1
<b>Group Id :</b>	83189677
<b>Group Maximum Duration :</b>	0
<b>Group Minimum Duration :</b>	120
<b>Show Attended Group? :</b>	No
<b>Edit Attended Group? :</b>	No

Break time : 0  
Group Marks : 120

## Pharmacy

Section Id : 83189677  
Section Number : 1  
Section type : Online  
Mandatory or Optional : Mandatory  
Number of Questions : 120  
Number of Questions to be attempted : 120  
Section Marks : 120  
Maximum Instruction Time : 0  
Sub-Section Number : 1  
Sub-Section Id : 83189677  
Question Shuffling Allowed : Yes

Question Number : 1 Question Id : 8318969121 Question Type : MCQ Option Shuffling : Yes Display Question Number : Yes  
Correct Marks : 1 Wrong Marks : 0

The drug 'Pectin' belongs to the category of \_\_\_\_\_.

Options :

1. ✓ polyuronide
2. ✗ disaccharide

alkaloid

3. ✘

Monosaccharide

4. ✘

Question Number : 2 Question Id : 8318969122 Question Type : MCQ Option Shuffling : Yes Display Question Number : Yes  
Correct Marks : 1 Wrong Marks : 0

Source of *pale catechu* is \_\_\_\_\_.

Options :

Eucalyptus rostrata

1. ✘

Uncaria gambir

2. ✔

Terminalia chebula

3. ✘

Punica granatum

4. ✘

Question Number : 3 Question Id : 8318969123 Question Type : MCQ Option Shuffling : Yes Display Question Number : Yes

Correct Marks : 1 Wrong Marks : 0

Trichomes with quadracellular head & sessile stalk are seen in \_\_\_\_\_.

Options :

1. ✘ Digitalis
2. ✘ Belladonna
3. ✘ Hyoscyamus
4. ✔ Vasaka

Question Number : 4 Question Id : 8318969124 Question Type : MCQ Option Shuffling : Yes Display Question Number : Yes

Correct Marks : 1 Wrong Marks : 0

Which of the following crude drug is obtained from mineral origin?

Options :

1. ✘ Digitalis

2. ✘ Sandalwood

3. ✘ Nux vomica

4. ✔ Kaolin

Question Number : 5 Question Id : 8318969125 Question Type : MCQ Option Shuffling : Yes Display Question Number : Yes  
Correct Marks : 1 Wrong Marks : 0

The natural oil of winter green majorly contains \_\_\_\_\_.

Options :

1. ✔ methyl salicylate

2. ✘ salicylic acid

3. ✘ phenol

4. ✘  $\alpha$ -naphthol

Question Number : 6 Question Id : 8318969126 Question Type : MCQ Option Shuffling : Yes Display Question Number : Yes

Correct Marks : 1 Wrong Marks : 0

*Mangifera indica* belongs to the family:

Options :

1. ✘ Phyllanthaceae
2. ✘ Combretaceae
3. ✘ Meliaceae
4. ✔ Anacardiaceae

Question Number : 7 Question Id : 8318969127 Question Type : MCQ Option Shuffling : Yes Display Question Number : Yes

Correct Marks : 1 Wrong Marks : 0

Steroidal saponins are biosynthesized via \_\_\_\_\_.

Options :

1. ✘ shikimic acid pathway

2. ✓ mevalonic acid pathway

3. ✘ aceto-acetate pathway

4. ✘ Calvin's cycle

Question Number : 8 Question Id : 8318969128 Question Type : MCQ Option Shuffling : Yes Display Question Number : Yes  
Correct Marks : 1 Wrong Marks : 0

The swelling index of a crude drug is used to evaluate the \_\_\_\_\_.

Options :

1. ✘ presence of alkaloids

2. ✘ moisture content

3. ✓ mucilage content

4. ✘ presence of volatile oils

Question Number : 9 Question Id : 8318969129 Question Type : MCQ Option Shuffling : Yes Display Question Number : Yes

Correct Marks : 1 Wrong Marks : 0

The biological source of cotton fiber is \_\_\_\_\_.

Options :

1. ✘ *Cyamopsis tetragonolobus*
2. ✔ *Gossypium barbadense*
3. ✘ *Saraca indica*
4. ✘ *Arachis hypogaea*

Question Number : 10 Question Id : 8318969130 Question Type : MCQ Option Shuffling : Yes Display Question Number : Yes

Correct Marks : 1 Wrong Marks : 0

Number of isoprene units present in diterpenes are \_\_\_\_\_.

Options :

1. ✘ 2

2. ✘ 3

3. ✔ 4

4. ✘ 5

Question Number : 11 Question Id : 8318969131 Question Type : MCQ Option Shuffling : Yes Display Question Number : Yes  
Correct Marks : 1 Wrong Marks : 0

Which is the specific test for the identification of cardiac glycoside?

Options :

1. ✘ Baljet's test

2. ✘ Legal test

3. ✘ Keller – kiliani test

4. ✔ 3,5- dinitro benzoic acid test

Question Number : 12 Question Id : 8318969132 Question Type : MCQ Option Shuffling : Yes Display Question Number : Yes

Correct Marks : 1 Wrong Marks : 0

Match the following correctly.

A) Goldbeater skin test	1) Carbohydrates
B) Molisch test	2) Terpenoids
C) Mayer's test	3) Tannins
D) Salkowski test	4) Alkaloids

Options :

1. ✘ A-2; B-3; C-4; D-1

2. ✘ A-4; B-3; C-2; D-1

3. ✔ A-3; B-1; C-4; D-2

4. ✘ A-1; B-4; C-2; D-3

Question Number : 13 Question Id : 8318969133 Question Type : MCQ Option Shuffling : Yes Display Question Number : Yes

Correct Marks : 1 Wrong Marks : 0

Glass wool is primarily used in pharmaceutical applications for \_\_\_\_\_.

Options :

1. ✘ drug formulation
2. ✔ insulation and filtration
3. ✘ textile production
4. ✘ capsule coating

Question Number : 14 Question Id : 8318969134 Question Type : MCQ Option Shuffling : Yes Display Question Number : Yes  
Correct Marks : 1 Wrong Marks : 0

An alkaloid containing one of the nitrogen atoms as quaternary nitrogen is:

Options :

1. ✘ Atropine

2. ✘ Ephedrine

3. ✔ Tubocurarine

4. ✘ Mescaline

Question Number : 15 Question Id : 8318969135 Question Type : MCQ Option Shuffling : Yes Display Question Number : Yes  
Correct Marks : 1 Wrong Marks : 0

Which of the following plant cell culture technique is generally regarded as a “closed system” technique?

Options :

1. ✘ Continuous cultures

2. ✔ Batch suspension cultures

3. ✘ Semi continuous cultures

4. ✘ Petri plate cultures

Question Number : 16 Question Id : 8318969136 Question Type : MCQ Option Shuffling : Yes Display Question Number : Yes  
Correct Marks : 1 Wrong Marks : 0

Rasburicase is a newer drug used in gout. It acts by \_\_\_\_\_.

Options :

1. ✘ decreasing urate synthesis
2. ✔ increasing urate oxidation
3. ✘ decreasing intestinal absorption of uric acid
4. ✘ increasing renal excretion of uric acid

Question Number : 17 Question Id : 8318969137 Question Type : MCQ Option Shuffling : Yes Display Question Number : Yes  
Correct Marks : 1 Wrong Marks : 0

1-[(5-methylpyrazin-2-yl-carboxamide) ethyl phenyl sulphonyl]-3cyclohexyl urea is \_\_\_\_\_.

Options :

1. ✘ Glimepride
2. ✔ Glipizide
3. ✘ Glyburide
4. ✘ Repaglinide

Question Number : 18 Question Id : 8318969138 Question Type : MCQ Option Shuffling : Yes Display Question Number : Yes  
Correct Marks : 1 Wrong Marks : 0

Select the INCORRECT statement with respect to the SAR of adrenergic agonists with specific reference to 3',5'-dihydroxy ring substitution pattern.

Options :

1. ✓ Increases the drug distribution
2. ✘ Increases resistance to metabolism by COMT
3. ✘ Provides selectivity for  $\beta$ 2-receptors
4. ✘ Orally active bronchodilator

Question Number : 19 Question Id : 8318969139 Question Type : MCQ Option Shuffling : Yes Display Question Number : Yes  
Correct Marks : 1 Wrong Marks : 0

The term “bioisosterism” in drug design aims to maintain or improve the molecule's biological activity by:

Options :

1. ✘ Replacement of a functional group with another that enhances lipophilicity

Replacement of a chemical group in a molecule with another that has similar physical and chemical properties

2. ✓

Structural modification to increase water solubility

3. ✘

Conversion of a drug into a salt form

4. ✘

Question Number : 20 Question Id : 8318969140 Question Type : MCQ Option Shuffling : Yes Display Question Number : Yes  
Correct Marks : 1 Wrong Marks : 0

Pharmacophore modelling involves \_\_\_\_\_.

Options :

identifying excipients for formulation development with enhanced bioavailability

1. ✘

monitoring plasma levels of drugs for better pharmacodynamics

2. ✘

predicting half-life of drugs

3. ✘

creating a 3D model of the necessary features to interact with a target

4. ✔

Question Number : 21 Question Id : 8318969141 Question Type : MCQ Option Shuffling : Yes Display Question Number : Yes  
Correct Marks : 1 Wrong Marks : 0

IUPAC name of aspirin is \_\_\_\_\_.

Options :

salicylic anhydride

1. ✘

2-ethyl salicylate

2. ✘

2-acetoxybenzoic acid

3. ✔

4-hydroxybenzoic acid

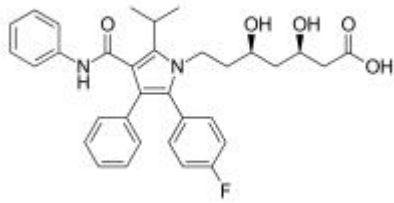
4. ✘

Question Number : 22 Question Id : 8318969142 Question Type : MCQ Option Shuffling : Yes Display Question Number : Yes

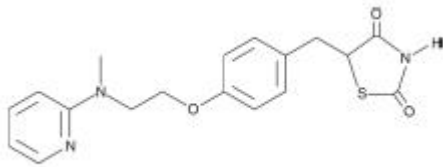
Correct Marks : 1 Wrong Marks : 0

Which of the following drugs act via PPAR- $\alpha$  activation?

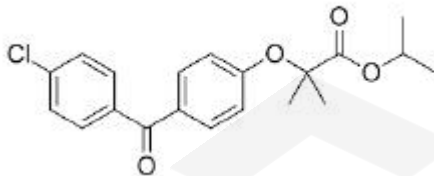
Options :



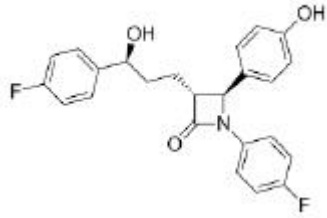
1. ✘



2. ✘



3. ✔



4. ✘

Question Number : 23 Question Id : 8318969143 Question Type : MCQ Option Shuffling : Yes Display Question Number : Yes  
Correct Marks : 1 Wrong Marks : 0

What does “QSAR” stands for in drug design?

Options :

Qualitative Selective-Activity Response

1. ✘

Quick Structure-Activity Response

2. ✘

Quantitative Structure-Activity Relationship

3. ✔

Quantitative Selective-Activity Relationship

4. ✘

Question Number : 24 Question Id : 8318969144 Question Type : MCQ Option Shuffling : Yes Display Question Number : Yes

Correct Marks : 1 Wrong Marks : 0

What is the primary function of dental abrasives?

Options :

1. ✓ Removing plaque and stains
2. ✗ Enhancing digestion
3. ✗ Neutralizing stomach acid
4. ✗ Regulating blood pressure

Question Number : 25 Question Id : 8318969145 Question Type : MCQ Option Shuffling : Yes Display Question Number : Yes

Correct Marks : 1 Wrong Marks : 0

Which of the following statements is true regarding the following structure (nevirapine)?



Options :

It is a nucleoside reverse transcriptase inhibitor (NRTI).

1. ✘

It binds to an allosteric binding site next to the substrate binding site of reverse transcriptase

2. ✔

It is an achiral molecule

3. ✘

It is an example of a second-generation drug of its class

4. ✘

Correct Marks : 1 Wrong Marks : 0

When 6-OH of morphine is replaced by 6-O-acetyl group, then the activity will \_\_\_\_\_.

Options :

1. ✓ increase
2. ✗ decrease
3. ✗ no effect
4. ✗ Antagonistic

Question Number : 27 Question Id : 8318969147 Question Type : MCQ Option Shuffling : Yes Display Question Number : Yes

Correct Marks : 1 Wrong Marks : 0

Which of the following drugs causes severe birth defects due to stereo chemical differences in its enantiomers?

Options :

1. ✗ Tamoxifen

2. ✘ Methamphetamine

3. ✔ Thalidomide

4. ✘ Paclitaxel

Question Number : 28 Question Id : 8318969148 Question Type : MCQ Option Shuffling : Yes Display Question Number : Yes  
Correct Marks : 1 Wrong Marks : 0

The antihypertensive drug with a tetrazole nucleus that binds to AT1 receptor with high affinity is \_\_\_\_\_.

Options :

1. ✘ diazoxide

2. ✔ valsartan

3. ✘ talupidine

fosinopril

4. ✘

Question Number : 29 Question Id : 8318969149 Question Type : MCQ Option Shuffling : Yes Display Question Number : Yes  
Correct Marks : 1 Wrong Marks : 0

The E/Z nomenclature is used to describe \_\_\_\_\_ isomerism.

Options :

1. ✘ optical

2. ✔ geometrical

3. ✘ chain

4. ✘ functional group

Question Number : 30 Question Id : 8318969150 Question Type : MCQ Option Shuffling : Yes Display Question Number : Yes  
Correct Marks : 1 Wrong Marks : 0

Which enzyme is targeted by beta-lactam antibiotics?

Options :

1. ✘ DNA gyrase
2. ✔ Transpeptidase
3. ✘ Reverse transcriptase
4. ✘ Topoisomerase

Question Number : 31 Question Id : 8318969151 Question Type : MCQ Option Shuffling : Yes Display Question Number : Yes  
Correct Marks : 1 Wrong Marks : 0

Lipinski's rule of five is linked with \_\_\_\_\_.

Options :

1. ✘ drug's metabolic pathway
2. ✘ potency of drug-receptor binding

3. ✓ drug-likeness for oral bioavailability

4. ✘ stability under acidic conditions

Question Number : 32 Question Id : 8318969152 Question Type : MCQ Option Shuffling : Yes Display Question Number : Yes  
Correct Marks : 1 Wrong Marks : 0

Which of the following is not the category of cardiotonic agents?

Options :

1. ✘ Calcium sensitizers

2. ✘ Phosphodiesterase III inhibitors

3. ✓ Beta-adrenergic antagonists

4. ✘ Cardiac glycosides

Question Number : 33 Question Id : 8318969153 Question Type : MCQ Option Shuffling : Yes Display Question Number : Yes

Correct Marks : 1 Wrong Marks : 0

SAR studies of sulfonamides suggest that antibacterial activity is not lost when the \_\_\_\_\_.

Options :

1. ✓ sulfonamide group is acetylated
2. ✘ amine group is replaced with halogens
3. ✘ aromatic ring is replaced with a non-aromatic moiety
4. ✘ sulfonyl group is replaced by a carboxyl group

Question Number : 34 Question Id : 8318969154 Question Type : MCQ Option Shuffling : Yes Display Question Number : Yes

Correct Marks : 1 Wrong Marks : 0

What is the role of ethanol in the preparation of barium sulphate reagent?

Options :

1. ✘ To provide an acidic medium
2. ✘ To oxidize barium
3. ✘ To precipitate barium
4. ✔ To prevent super-saturation

Question Number : 35 Question Id : 8318969155 Question Type : MCQ Option Shuffling : Yes Display Question Number : Yes  
Correct Marks : 1 Wrong Marks : 0

Identify the key step in the synthesis of beta-blockers.

Options :

1. ✔ Condensation of amines with aromatic rings
2. ✘ Hydrolysis of esters

## Oxidation of alcohols

3. ✘

## Reduction of ketones

4. ✘

Question Number : 36 Question Id : 8318969156 Question Type : MCQ Option Shuffling : Yes Display Question Number : Yes  
Correct Marks : 1 Wrong Marks : 0

As compared to unfractionated heparin, low molecular weight heparins \_\_\_\_\_.

Options :

1. ✓ are absorbed more uniformly when given subcutaneously

2. ✘ require more frequent laboratory monitoring

3. ✘ can be given to patients with heparin induced thrombocytopenia

predispose to a higher risk of osteopenia

4. ✘

Question Number : 37 Question Id : 8318969157 Question Type : MCQ Option Shuffling : Yes Display Question Number : Yes  
Correct Marks : 1 Wrong Marks : 0

Anxiolytic drugs like lorazepam primarily act on \_\_\_\_\_ receptors.

Options :

1. ✘ serotonin

2. ✘ NMDA

3. ✔ GABA-A

4. ✘ dopamine

Question Number : 38 Question Id : 8318969158 Question Type : MCQ Option Shuffling : Yes Display Question Number : Yes  
Correct Marks : 1 Wrong Marks : 0

Which of the following is used as anticaries agent?

Options :

1. ✘ Calcium carbonate
2. ✘ Sodium lauryl sulphate
3. ✘ Zinc chloride
4. ✔ Sodium fluoride

Question Number : 39 Question Id : 8318969159 Question Type : MCQ Option Shuffling : Yes Display Question Number : Yes  
Correct Marks : 1 Wrong Marks : 0

The locally acting antacid(s) known for its constipation effect is/are:

Options :

1. ✘ Sodium bicarbonate

2. ✓ Aluminium hydroxide

3. ✗ Magnesium hydroxide

4. ✗ Sucralose

Question Number : 40 Question Id : 8318969160 Question Type : MCQ Option Shuffling : Yes Display Question Number : Yes  
Correct Marks : 1 Wrong Marks : 0

Match the following limit test reagents correctly.

A) Arsenic	1) Dithizone
B) Lead	2) Thioglycolic acid
C) Iron	3) Barium chloride
D) Barium	4) Mercuric chloride

Options :

1. ✓ A-4; B-1; C-2; D-3

2. ✘ A-3; B-2; C-4; D-1

3. ✘ A-2; B-1; C-4; D-3

4. ✘ A-3; B-4; C-2; D-1

Question Number : 41 Question Id : 8318969161 Question Type : MCQ Option Shuffling : Yes Display Question Number : Yes  
Correct Marks : 1 Wrong Marks : 0

In general, Kraft point phenomenon is generally not exhibited by which of the following surfactant?

Options :

1. ✔ Tweens

2. ✘ Sodium lauryl sulphate

3. ✘ Calcium oleate

## Sodium stearate

4. ✘

Question Number : 42 Question Id : 8318969162 Question Type : MCQ Option Shuffling : Yes Display Question Number : Yes  
Correct Marks : 1 Wrong Marks : 0

The angle of repose is primarily used to determine \_\_\_\_\_.

Options :

particle density

1. ✘

flowability of powders

2. ✔

surface charge

3. ✘

particle solubility

4. ✘

Question Number : 43 Question Id : 8318969163 Question Type : MCQ Option Shuffling : Yes Display Question Number : Yes  
Correct Marks : 1 Wrong Marks : 0

A first-order reaction has a half-life of 24 hours. What is its rate constant (k)?

Options :

1. ✓  $0.0289 \text{ hr}^{-1}$
2. ✗  $0.693 \text{ hr}^{-1}$
3. ✗  $0.5 \text{ hr}^{-1}$
4. ✗  $1.2 \text{ hr}^{-1}$

Question Number : 44 Question Id : 8318969164 Question Type : MCQ Option Shuffling : Yes Display Question Number : Yes  
Correct Marks : 1 Wrong Marks : 0

What is water number?

Options :

1. ✓ Maximum amount of water that can be added to 100 g of a base at a given temperature

2. ✘ Minimum amount of water that can be added to 100 g of a base at a given temperature
3. ✘ Minimum amount of water that can be added to 5 g of a base at a given temperature
4. ✘ Minimum amount of water that can be added to 40 g of a base at given temperature

Question Number : 45 Question Id : 8318969165 Question Type : MCQ Option Shuffling : Yes Display Question Number : Yes  
Correct Marks : 1 Wrong Marks : 0

What is a molecular phenomenon where by adding a second solute results in an increase in aqueous solubility of poorly soluble solute?

Options :

1. ✘ Peptization
2. ✔ Hydrotrophy

Eutectic mixture formation

3. ✘

Levigation

4. ✘

Question Number : 46 Question Id : 8318969166 Question Type : MCQ Option Shuffling : Yes Display Question Number : Yes  
Correct Marks : 1 Wrong Marks : 0

If pKa of a weak electrolyte is 4.2, how much percentage of it will be ionized at pH of 5.2?

Options :

1. ✘ 50%

2. ✔ >50%

3. ✘ <50%

4. ✘ Cannot be predicted

Question Number : 47 Question Id : 8318969167 Question Type : MCQ Option Shuffling : Yes Display Question Number : Yes  
Correct Marks : 1 Wrong Marks : 0

The distance between two tangents on opposite sides of the particle parallel to some fixed direction is called as \_\_\_\_\_ diameter.

Options :

1. ✘ Martin diameter
2. ✔ Feret diameter
3. ✘ Projected area diameter
4. ✘ Projected number diameter

Question Number : 48 Question Id : 8318969168 Question Type : MCQ Option Shuffling : Yes Display Question Number : Yes

Correct Marks : 1 Wrong Marks : 0

The density that is determined by displacement of helium is known as \_\_\_\_\_ density.

Options :

1. ✔ true

2. ✘ intrinsic

3. ✘ granule

4. ✘ bulk

Question Number : 49 Question Id : 8318969169 Question Type : MCQ Option Shuffling : Yes Display Question Number : Yes  
Correct Marks : 1 Wrong Marks : 0

Which sterilization method is suitable for heat-labile parenteral solutions?

Options :

1. ✘ Autoclaving

2. ✘ Dry heat

3. ✔ Filtration

## UV radiation

4. ✘

Question Number : 50 Question Id : 8318969170 Question Type : MCQ Option Shuffling : Yes Display Question Number : Yes  
Correct Marks : 1 Wrong Marks : 0

The solubility of the drug will be high when it is in its \_\_\_\_\_ form.

Options :

1. ✘ stable

2. ✔ metastable

3. ✘ unstable

4. ✘ crystalline

Question Number : 51 Question Id : 8318969171 Question Type : MCQ Option Shuffling : Yes Display Question Number : Yes  
Correct Marks : 1 Wrong Marks : 0

In a suspension, the purpose of a flocculating agent is to \_\_\_\_\_.

Options :

1. ✘ increase viscosity
2. ✔ prevent caking
3. ✘ enhance solubility
4. ✘ reduce particle size

Question Number : 52 Question Id : 8318969172 Question Type : MCQ Option Shuffling : Yes Display Question Number : Yes  
Correct Marks : 1 Wrong Marks : 0

Which suppository base is water-soluble?

Options :

1. ✘ Cocoa butter
2. ✔ PEG

3. ✘ Gelatin

4. ✘ Witepsol

Question Number : 53 Question Id : 8318969173 Question Type : MCQ Option Shuffling : Yes Display Question Number : Yes  
Correct Marks : 1 Wrong Marks : 0

Vanishing cream is an example of \_\_\_\_\_.

Options :

1. ✘ w/o emulsion

2. ✔ o/w

3. ✘ w/o/w

4. ✘ Microemulsion

Question Number : 54 Question Id : 8318969174 Question Type : MCQ Option Shuffling : Yes Display Question Number : Yes  
Correct Marks : 1 Wrong Marks : 0

Bulking agent used for parenteral preparation is \_\_\_\_\_.

Options :

1. ✘ sodium metabisulphite
2. ✘ benzyl alcohol
3. ✘ carboxylic acid
4. ✔ Sorbitol

Question Number : 55 Question Id : 8318969175 Question Type : MCQ Option Shuffling : Yes Display Question Number : Yes  
Correct Marks : 1 Wrong Marks : 0

The disintegration time for sugar coated tablet is \_\_\_\_\_ minutes.

Options :

1. ✘ 30
2. ✘ 45

3. ✓ 60

4. ✘ 75

Question Number : 56 Question Id : 8318969176 Question Type : MCQ Option Shuffling : Yes Display Question Number : Yes  
Correct Marks : 1 Wrong Marks : 0

Which of the following tablet problems cannot be eliminated by pre-compression?

Options :

1. ✓ Mottling

2. ✘ Lamination

3. ✘ Double impression

4. ✘ Capping

Question Number : 57 Question Id : 8318969177 Question Type : MCQ Option Shuffling : Yes Display Question Number : Yes  
Correct Marks : 1 Wrong Marks : 0

Which of the following is not used for the enteric coating of the tablets?

Options :

1. ✘ Cellulose acetate pthalate
2. ✔ Hydroxy propyl methyl cellulose
3. ✘ Shellac
4. ✘ Eudragit L

Question Number : 58 Question Id : 8318969178 Question Type : MCQ Option Shuffling : Yes Display Question Number : Yes  
Correct Marks : 1 Wrong Marks : 0

Study of adverse effects of drugs and toxic substances in the body is

\_\_\_\_\_.

Options :

1. ✔ Clinical Toxicology

2. ✘ Biopharmaceutics

3. ✘ Clinical Pharmacokinetics

4. ✘ Toxicokinetics

Question Number : 59 Question Id : 8318969179 Question Type : MCQ Option Shuffling : Yes Display Question Number : Yes  
Correct Marks : 1 Wrong Marks : 0

LAL test is used as an in-process control in parenteral preparation to examine presence of \_\_\_\_\_.

Options :

1. ✘ pyrogens

2. ✔ endotoxins

3. ✘ exotoxins

proteinaceous matter

4. ✘

Question Number : 60 Question Id : 8318969180 Question Type : MCQ Option Shuffling : Yes Display Question Number : Yes  
Correct Marks : 1 Wrong Marks : 0

If the plasma half-life of a drug is 1.386 h and the volume of distribution is 10 L, the total body clearance of the drug without any unit conversion will be \_\_\_\_\_.

Options :

1. ✔ 5

2. ✘ 20

3. ✘ 13.86

4. ✘ 6.93

Question Number : 61 Question Id : 8318969181 Question Type : MCQ Option Shuffling : Yes Display Question Number : Yes  
Correct Marks : 1 Wrong Marks : 0

The best explanation for the absorption of salicylic acid from intestine, despite being ionized is:

Options :

1. ✘ High surface area of the drug molecules
2. ✘ Dissolution of drug
3. ✔ Availability of 1% of the un-ionized form
4. ✘ Availability of receptors

Question Number : 62 Question Id : 8318969182 Question Type : MCQ Option Shuffling : Yes Display Question Number : Yes  
Correct Marks : 1 Wrong Marks : 0

The area under the serum concentration time curve represents the \_\_\_\_\_.

Options :

1. ✘ biological half-life of the drug

2. ✓ amount of drug absorbed

3. ✘ amount of drug excreted in the urine

4. ✘ amount of drug in the original dosage form

Question Number : 63 Question Id : 8318969183 Question Type : MCQ Option Shuffling : Yes Display Question Number : Yes  
Correct Marks : 1 Wrong Marks : 0

Fumaric acid is used in gelatin capsule shell is used as \_\_\_\_\_.

Options :

1. ✘ plasticizer

2. ✘ antioxidant

3. ✓ solubilizer

## Opacifier

4. ✖

Question Number : 64 Question Id : 8318969184 Question Type : MCQ Option Shuffling : Yes Display Question Number : Yes  
Correct Marks : 1 Wrong Marks : 0

Wurster's process is also better known as \_\_\_\_\_.

Options :

1. ✖ rotary plate process
2. ✔ air suspension coating
3. ✖ coacervation process
4. ✖ pan coating

Question Number : 65 Question Id : 8318969185 Question Type : MCQ Option Shuffling : Yes Display Question Number : Yes  
Correct Marks : 1 Wrong Marks : 0

What is the ideal particle size for topical powders?

Options :

1. ✓ 50 to 100  $\mu\text{m}$
2. ✗ 150 to 250  $\mu\text{m}$
3. ✗ 250 to 500  $\mu\text{m}$
4. ✗ Above 1000  $\mu\text{m}$

Question Number : 66 Question Id : 8318969186 Question Type : MCQ Option Shuffling : Yes Display Question Number : Yes  
Correct Marks : 1 Wrong Marks : 0

A super disintegrant in tablet formulation is \_\_\_\_\_.

Options :

1. ✓ sodium starch glycolate
2. ✗ starch

3. ✘ PVP

4. ✘ Mg-aluminium silicate

Question Number : 67 Question Id : 8318969187 Question Type : MCQ Option Shuffling : Yes Display Question Number : Yes  
Correct Marks : 1 Wrong Marks : 0

The creatinine clearance in normal 70 kg individuals is typically in the range of \_\_\_\_\_ mL/min.

Options :

1. ✔ 100-120

2. ✘ 200-250

3. ✘ 50-100

4. ✘ 120-200

Question Number : 68 Question Id : 8318969188 Question Type : MCQ Option Shuffling : Yes Display Question Number : Yes

Correct Marks : 1 Wrong Marks : 0

A co-solvent used in the preparation of parenteral products is \_\_\_\_\_.

Options :

1. ✘ benzyl alcohol
2. ✘ methyl alcohol
3. ✔ dimethyl acetamide
4. ✘ phenol

Question Number : 69 Question Id : 8318969189 Question Type : MCQ Option Shuffling : Yes Display Question Number : Yes

Correct Marks : 1 Wrong Marks : 0

If zeta potential of a suspension is high, then the system will be considered as \_\_\_\_\_.

Options :

1. ✔ deflocculed

2. ✘ flocculed

3. ✘ emulsion

4. ✘ sedimentation

Question Number : 70 Question Id : 8318969190 Question Type : MCQ Option Shuffling : Yes Display Question Number : Yes  
Correct Marks : 1 Wrong Marks : 0

Non-linear pharmacokinetics is most likely due to \_\_\_\_\_.

Options :

1. ✘ first-pass metabolism

2. ✔ saturation of metabolic enzymes

3. ✘ renal excretion

4. ✘ high plasma protein binding

Question Number : 71 Question Id : 8318969191 Question Type : MCQ Option Shuffling : Yes Display Question Number : Yes  
Correct Marks : 1 Wrong Marks : 0

Match the following:

A) Schedule Y	1) List of minimum equipment for efficient running of a pharmacy
B) Schedule G	2) Life period of drugs
C) Schedule N	3) Requirements and guidelines on clinical trials for import and manufacture of new drugs
D) Schedule P	4) List of drugs to be used under medical supervision

Options :

1. ✘ A-2;, B-3; C-4; D-1
2. ✘ A-4; B-1; C-2; D-3
3. ✔ A-3; B-4; C-1; D-2

4. ✘ A-2; B-4; C-2; D-3

Question Number : 72 Question Id : 8318969192 Question Type : MCQ Option Shuffling : Yes Display Question Number : Yes  
Correct Marks : 1 Wrong Marks : 0

The first schedule of the Drugs and Cosmetics Act, 1940 deals with \_\_\_\_\_.

Options :

1. ✘ standards to be complied with by imported drugs and by drugs manufactured for sale, stocked or exhibited for sale, sold or distributed
2. ✘ standard to be complied for cosmetics
3. ✔ authoritative books of Ayurvedic, Sidhha and Unani Tibb system
4. ✘ standards to be complied for medical devices

Question Number : 73 Question Id : 8318969193 Question Type : MCQ Option Shuffling : Yes Display Question Number : Yes

Correct Marks : 1 Wrong Marks : 0

The Drugs Controller General of India (DCGI) can issue an order to ban a drug on the recommendations of \_\_\_\_\_

Options :

Indian Council of Medical Research

1. ✘

Pharmacy Council of India

2. ✘

Drugs Technical Advisory Board

3. ✔

National Pharmaceutical Pricing Authority

4. ✘

Question Number : 74 Question Id : 8318969194 Question Type : MCQ Option Shuffling : Yes Display Question Number : Yes  
Correct Marks : 1 Wrong Marks : 0

\_\_\_\_\_ is a psychotropic substance under the Narcotics and Psychotropic Substances Act.

Options :

1. ✓ Barbital
2. ✘ Ampicillin
3. ✘ Albendazole
4. ✘ Chloroquine

Question Number : 75 Question Id : 8318969195 Question Type : MCQ Option Shuffling : Yes Display Question Number : Yes  
Correct Marks : 1 Wrong Marks : 0

Who is the Ex-officio Members of Pharmacy Council of India?

Options :

1. ✘ Director, Central Drugs Research Laboratory
2. ✓ Director General of Health Services

President, Medical Council of India

3. ✘

Director, Central Research Institute

4. ✘

Question Number : 76 Question Id : 8318969196 Question Type : MCQ Option Shuffling : Yes Display Question Number : Yes  
Correct Marks : 1 Wrong Marks : 0

Which drug acts as a selective serotonin reuptake inhibitor (SSRI)?

Options :

Amitriptyline

1. ✘

Fluoxetine

2. ✔

Diazepam

3. ✘

Phenelzine

4. ✘

Question Number : 77 Question Id : 8318969197 Question Type : MCQ Option Shuffling : Yes Display Question Number : Yes

Correct Marks : 1 Wrong Marks : 0

Atropine blocks the effects of acetylcholine at \_\_\_\_\_ receptors.

Options :

1. ✘ nicotinic
2. ✔ muscarinic
3. ✘ alpha-1
4. ✘ beta-2

Question Number : 78 Question Id : 8318969198 Question Type : MCQ Option Shuffling : Yes Display Question Number : Yes  
Correct Marks : 1 Wrong Marks : 0

Levothyroxine is a synthetic analogue of \_\_\_\_\_.

Options :

1. ✘ Triiodothyronine (T<sub>3</sub>)

2. ✓ Thyroxine (T<sub>4</sub>)

3. ✘ TSH

4. ✘ Calcitonin

Question Number : 79 Question Id : 8318969199 Question Type : MCQ Option Shuffling : Yes Display Question Number : Yes  
Correct Marks : 1 Wrong Marks : 0

Penicillins act by inhibiting \_\_\_\_\_.

Options :

1. ✘ cell membrane synthesis

2. ✘ DNA gyrase

3. ✓ cell wall synthesis

4. ✘ protein synthesis

Question Number : 80 Question Id : 8318969200 Question Type : MCQ Option Shuffling : Yes Display Question Number : Yes  
Correct Marks : 1 Wrong Marks : 0

Which of the following antidiabetic agent primarily enhances insulin sensitivity in target tissues?

Options :

1. ✘ Sulfonylureas
2. ✘ Biguanides
3. ✔ Thiazolidinediones
4. ✘ Alpha-glucosidase inhibitors

Question Number : 81 Question Id : 8318969201 Question Type : MCQ Option Shuffling : Yes Display Question Number : Yes  
Correct Marks : 1 Wrong Marks : 0

Which local anaesthetic is commonly used for spinal anaesthesia due to its long duration of action?

Options :

1. ✘ Lidocaine
2. ✔ Bupivacaine
3. ✘ Procaine
4. ✘ Mepivacaine

Question Number : 82 Question Id : 8318969202 Question Type : MCQ Option Shuffling : Yes Display Question Number : Yes  
Correct Marks : 1 Wrong Marks : 0

Development of drug resistance is not generally associated with overexpression of which of the following transporters?

Options :

1. ✘ BCRP
2. ✘ ABCB1

3. ✘ MDR1

4. ✔ Folate receptors

Question Number : 83 Question Id : 8318969203 Question Type : MCQ Option Shuffling : Yes Display Question Number : Yes  
Correct Marks : 1 Wrong Marks : 0

Which of the following cellular transport requires energy?

Options :

1. ✔ Active transport

2. ✘ Passive transport

3. ✘ Facilitated transport

4. ✘ Pinocytosis

Question Number : 84 Question Id : 8318969204 Question Type : MCQ Option Shuffling : Yes Display Question Number : Yes  
Correct Marks : 1 Wrong Marks : 0

Which of the following is not correct for the H<sub>1</sub> receptor antagonists?

Options :

1. ✘ Strongly block the increased capillary permeability caused by histamine
2. ✘ Suppress the flare and itching caused by intradermal injection
3. ✔ Always suppress the gastric secretion
4. ✘ Relieve the allergic reactions

Question Number : 85 Question Id : 8318969205 Question Type : MCQ Option Shuffling : Yes Display Question Number : Yes  
Correct Marks : 1 Wrong Marks : 0

Absorption of oral iron preparations can be facilitated by co-administering \_\_\_\_\_.

Options :

1. ✘ calcium carbonate

2. ✘ calcium phosphate

3. ✔ ascorbic acid

4. ✘ casein

Question Number : 86 Question Id : 8318969206 Question Type : MCQ Option Shuffling : Yes Display Question Number : Yes  
Correct Marks : 1 Wrong Marks : 0

The weight ratio of T4 and T3 in the combination preparations is

\_\_\_\_\_.

Options :

1. ✘ 1:3

2. ✘ 3:1

3. ✘ 1:4

4. ✔ 4:1

Question Number : 87 Question Id : 8318969207 Question Type : MCQ Option Shuffling : Yes Display Question Number : Yes  
Correct Marks : 1 Wrong Marks : 0

The antiplatelet action of aspirin involves \_\_\_\_\_ inhibition.

Options :

1. ✓  
arachidonic acid pathway
2. ✗  
ADP pathway
3. ✗  
glycoprotein IIb/IIIa receptor
4. ✗  
phosphodiesterase

Question Number : 88 Question Id : 8318969208 Question Type : MCQ Option Shuffling : Yes Display Question Number : Yes  
Correct Marks : 1 Wrong Marks : 0

The drug that is not metabolized using hydrolysis reaction is \_\_\_\_\_.

Options :

1. ✘ aspirin

2. ✘ lidocaine

3. ✔ morphine

4. ✘ procaine

Question Number : 89 Question Id : 8318969209 Question Type : MCQ Option Shuffling : Yes Display Question Number : Yes  
Correct Marks : 1 Wrong Marks : 0

Which receptor type is primarily involved in the "fight or flight" response?

Options :

1. ✔ alpha-1 adrenergic

2. ✘ beta-2 adrenergic

3. ✘ Muscarinic

4. ✘ Nicotinic

Question Number : 90 Question Id : 8318969210 Question Type : MCQ Option Shuffling : Yes Display Question Number : Yes  
Correct Marks : 1 Wrong Marks : 0

Find the direct oral anticoagulant drug from the following.

Options :

1. ✘ Heparin

2. ✔ Dabigatran

3. ✘ Warfarin

4. ✘ Aspirin

Question Number : 91 Question Id : 8318969211 Question Type : MCQ Option Shuffling : Yes Display Question Number : Yes  
Correct Marks : 1 Wrong Marks : 0

Which of the following is true regarding the purpose of taking a medication history of patient?

Options :

1. ✓ To identify potential drug interactions and allergies
2. ✘ To know the cost of medications
3. ✘ Both a and b are correct
4. ✘ Both a and b are incorrect

Question Number : 92 Question Id : 8318969212 Question Type : MCQ Option Shuffling : Yes Display Question Number : Yes  
Correct Marks : 1 Wrong Marks : 0

Which of the following is acting as an antidiarrheal agent?

Options :

1. ✘ Bisacodyl

2. ✘ Docusate
3. ✔ Loperamide
4. ✘ Lactulose

Question Number : 93 Question Id : 8318969213 Question Type : MCQ Option Shuffling : Yes Display Question Number : Yes  
Correct Marks : 1 Wrong Marks : 0

For the emergency treatment of severe hypoglycaemia, which of the following is administered?

Options :

1. ✘ Pramlintide
2. ✔ Glucagon
3. ✘ Rosiglitazone
4. ✘ Metformin

Question Number : 94 Question Id : 8318969214 Question Type : MCQ Option Shuffling : Yes Display Question Number : Yes  
Correct Marks : 1 Wrong Marks : 0

Identify the drug used in androgen replacement therapy.

Options :

1. ✘ Cortisol
2. ✘ Estrogen
3. ✘ Progesterone
4. ✔ Testosterone enanthate

Question Number : 95 Question Id : 8318969215 Question Type : MCQ Option Shuffling : Yes Display Question Number : Yes  
Correct Marks : 1 Wrong Marks : 0

The primary action of diuretics in hypertension management is

\_\_\_\_\_.

Options :

1. ✘ reducing urine output
2. ✔ reducing volume of blood
3. ✘ inhibiting calcium channels
4. ✘ increasing heart rate

Question Number : 96 Question Id : 8318969216 Question Type : MCQ Option Shuffling : Yes Display Question Number : Yes  
Correct Marks : 1 Wrong Marks : 0

When absorption energy is increased, then the shift is called \_\_\_\_\_.

Options :

1. ✘ Hypochromic shift
2. ✘ Hyperchromic shift

Bathochromic shift

3. ✘

Hypsochromic shift

4. ✔

Question Number : 97 Question Id : 8318969217 Question Type : MCQ Option Shuffling : Yes Display Question Number : Yes  
Correct Marks : 1 Wrong Marks : 0

What is the wavelength of finger print region?

Options :

1. ✘ 100-500  $\text{cm}^{-1}$

2. ✔ 500-1500  $\text{cm}^{-1}$

3. ✘ 1700-2000  $\text{cm}^{-1}$

4. ✘ 400-800  $\text{cm}^{-1}$

Question Number : 98 Question Id : 8318969218 Question Type : MCQ Option Shuffling : Yes Display Question Number : Yes  
Correct Marks : 1 Wrong Marks : 0

Beer lambert's law indicates \_\_\_\_\_.

Options :

1. ✓  
absorbance is directly proportional to concentration
2. ✘  
absorbance is indirectly proportional to concentration
3. ✘  
absorbance is indirectly proportional to path length
4. ✘  
absorbance is indirectly proportional to molar absorptivity

Question Number : 99 Question Id : 8318969219 Question Type : MCQ Option Shuffling : Yes Display Question Number : Yes  
Correct Marks : 1 Wrong Marks : 0

In HPLC analysis, what type of column is preferred?

Options :

1. ✘  
A column with high HETP and high number of plates

2. ✘ A column with low HETP and low number of plates
3. ✘ A column with high HETP and low number of plates
4. ✔ A column with low HETP and high number of plates

Question Number : 100 Question Id : 8318969220 Question Type : MCQ Option Shuffling : Yes Display Question Number : Yes  
Correct Marks : 1 Wrong Marks : 0

Following are the desirable properties of the liquid phase used in GLC EXCEPT for one of the following. Identify the same.

Options :

1. ✘ It should be inert to the analytes
2. ✔ It should have high viscosity at operating temperature
3. ✘ It should have low vapour pressure at the operating temperature

It should have a high resolving power

4. ✘

Question Number : 101 Question Id : 8318969221 Question Type : MCQ Option Shuffling : Yes Display Question Number : Yes  
Correct Marks : 1 Wrong Marks : 0

Which of the following is a primary function of GLP?

Options :

To ensure the safety of consumers by testing the quality of food products.

1. ✘

To establish a framework for conducting non-clinical studies, ensuring the quality, integrity, and reproducibility of the data generated.

2. ✔

To certify the quality of pharmaceutical products after they have been manufactured.

3. ✘

To ensure the proper storage and disposal of hazardous waste generated in a laboratory.

4. ✘

Question Number : 102 Question Id : 8318969222 Question Type : MCQ Option Shuffling : Yes Display Question Number : Yes  
Correct Marks : 1 Wrong Marks : 0

The electrode potentials are calculated by \_\_\_\_\_.

Options :

1. ✘ Ilkovic equation
2. ✘ Stokes equation
3. ✔ Nernst equation
4. ✘ Ohm's Law

Question Number : 103 Question Id : 8318969223 Question Type : MCQ Option Shuffling : Yes Display Question Number : Yes  
Correct Marks : 1 Wrong Marks : 0

ICH stands for \_\_\_\_\_.

Options :

1. ✘ International Committee on Harmonisation
2. ✘ International Conference on Harmonisation
3. ✔ International Council for Harmonisation
4. ✘ International Council of Harmony

Question Number : 104 Question Id : 8318969224 Question Type : MCQ Option Shuffling : Yes Display Question Number : Yes  
Correct Marks : 1 Wrong Marks : 0

Resolution of HPLC can not be modified by \_\_\_\_\_.

Options :

1. ✘ decreasing particle size
2. ✘ decreasing column diameter

3. ✘ changing flow rate

4. ✔ changing detector

Question Number : 105 Question Id : 8318969225 Question Type : MCQ Option Shuffling : Yes Display Question Number : Yes  
Correct Marks : 1 Wrong Marks : 0

The errors arising due to use of un-calibrated or improperly calibrated weights are known as:

Options :

1. ✘ Operational and personal errors

2. ✔ Instrumental and reagent errors

3. ✘ Errors of methods

4. ✘ Additive and proportional errors

Question Number : 106 Question Id : 8318969226 Question Type : MCQ Option Shuffling : Yes Display Question Number : Yes

Correct Marks : 1 Wrong Marks : 0

For the  $pH$  range of 2.8 to 4.6, which indicator should be preferred?

Options :

1. ✘ Phenolphthalein

2. ✘ Methyl red

3. ✘ Thymol blue

4. ✔ Bromophenol blue

Question Number : 107 Question Id : 8318969227 Question Type : MCQ Option Shuffling : Yes Display Question Number : Yes

Correct Marks : 1 Wrong Marks : 0

The phenomenon called “levelling effect” for weak acids will be observed in \_\_\_\_\_ solvents.

Options :

1. ✘ aprotic
2. ✔ protophilic
3. ✘ protogenic
4. ✘ amphiprotic

Question Number : 108 Question Id : 8318969228 Question Type : MCQ Option Shuffling : Yes Display Question Number : Yes  
Correct Marks : 1 Wrong Marks : 0

To obtain the best results in any of the quantitative TLC methods, the spots being used should have  $R_f$  values between \_\_\_\_\_.

Options :

1. ✘ 0.01 to 0.3
2. ✔ 0.3 to 0.7

3. ✘ 0.7 to 1.0

4. ✘ > 1.0

Question Number : 109 Question Id : 8318969229 Question Type : MCQ Option Shuffling : Yes Display Question Number : Yes  
Correct Marks : 1 Wrong Marks : 0

As per the Indian Pharmacopoeia, the test organism for the microbiological assay of amikacin is \_\_\_\_\_.

Options :

1. ✘ Saccharomyces cerevisiae

2. ✘ Micrococcus luteus

3. ✘ Klebsiella pneumoniae

4. ✔ Staphylococcus aureus

Question Number : 110 Question Id : 8318969230 Question Type : MCQ Option Shuffling : Yes Display Question Number : Yes  
Correct Marks : 1 Wrong Marks : 0

Subpart C of Good Laboratory Practice (GLP) regulations, specifically under 21 CFR Part-58, focuses on \_\_\_\_\_.

Options :

1. ✘ test and control articles
2. ✘ organisational and personnel
3. ✘ testing facilities operations
4. ✔ Facilities

Question Number : 111 Question Id : 8318969231 Question Type : MCQ Option Shuffling : Yes Display Question Number : Yes  
Correct Marks : 1 Wrong Marks : 0

The relationship between the atoms present in their ground-state and excited-state in flame photometry is given by \_\_\_\_\_ equation.

Options :

1. ✘ Arrhenius

2. ✘ Nernst

3. ✔ Boltzmann

4. ✘ de Broglie

Question Number : 112 Question Id : 8318969232 Question Type : MCQ Option Shuffling : Yes Display Question Number : Yes  
Correct Marks : 1 Wrong Marks : 0

Which of the following functional group(s) does not show two absorption peaks in IR spectroscopy:

Options :

1. ✘ Anhydride

2. ✘ Primary amine

3. ✘ Nitro

4. ✔ Secondary amine

Question Number : 113 Question Id : 8318969233 Question Type : MCQ Option Shuffling : Yes Display Question Number : Yes  
Correct Marks : 1 Wrong Marks : 0

If 10 mL of 0.1 M sulphuric acid solution requires 20 mL of NaOH solution, then the normality of NaOH solution is:

Options :

1. ✔ 0.1 N

2. ✘ 0.05 N

3. ✘ 0.2 N

4. ✘ 0.4 N

Question Number : 114 Question Id : 8318969234 Question Type : MCQ Option Shuffling : Yes Display Question Number : Yes  
Correct Marks : 1 Wrong Marks : 0

During titration of strong acid with a weak base, which one is correct with respect to conductance?

Options :

1. ✘ It increases till the end point
2. ✔ It decreases till the end point
3. ✘ End point cannot be determined using conductimetry
4. ✘ Conductance not altered

Question Number : 115 Question Id : 8318969235 Question Type : MCQ Option Shuffling : Yes Display Question Number : Yes  
Correct Marks : 1 Wrong Marks : 0

Which substance is commonly used titrant in iodometric titrations?

Options :

1. ✘ Potassium iodide

2. ✓ Sodium thiosulfate
3. ✗ Iodine solution
4. ✗ Potassium permanganate

Question Number : 116 Question Id : 8318969236 Question Type : MCQ Option Shuffling : Yes Display Question Number : Yes  
Correct Marks : 1 Wrong Marks : 0

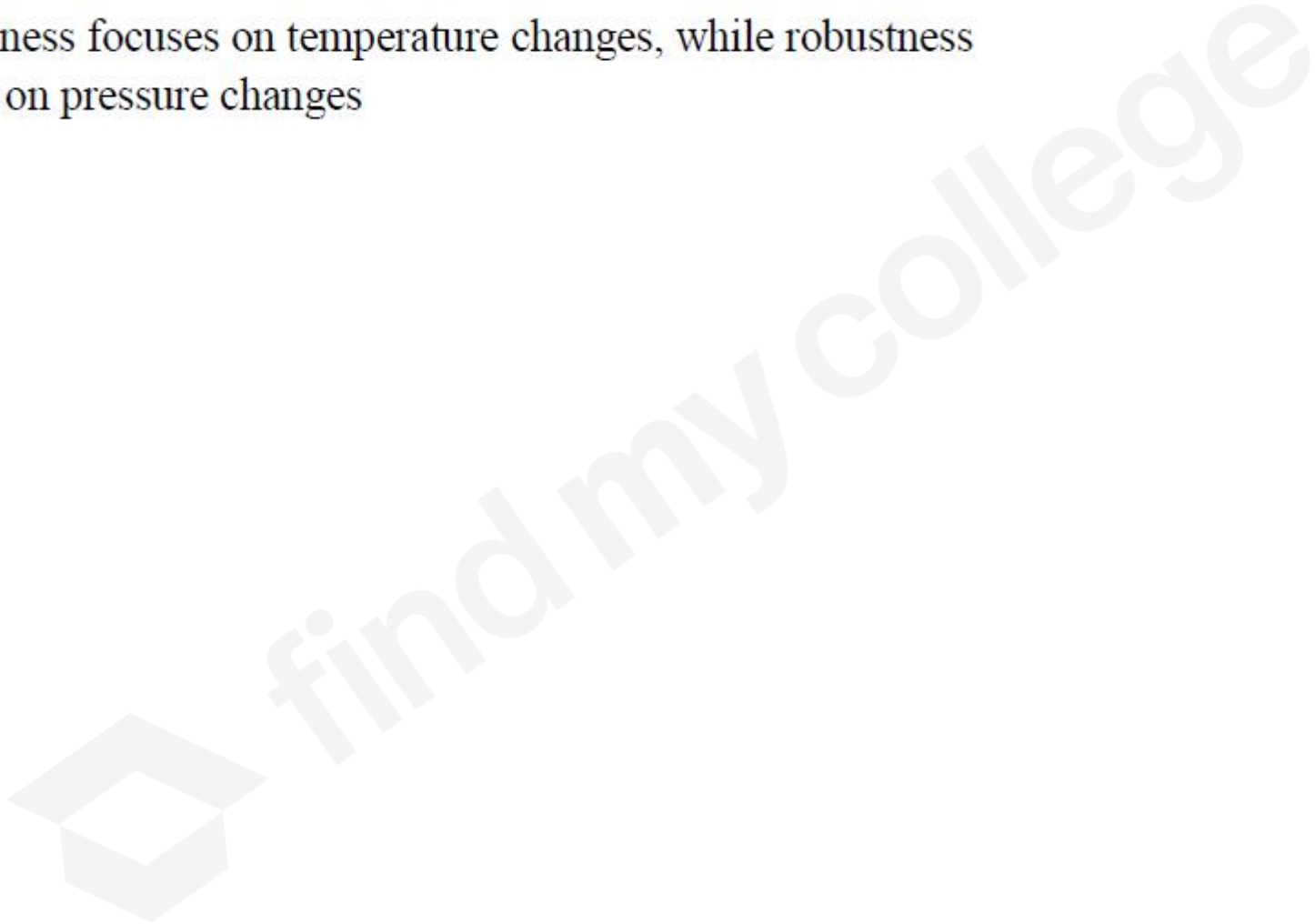
Which of the following is correct about robustness and ruggedness in method validation?

Options :

1. ✗ Robustness evaluates inter-laboratory variations, while ruggedness evaluates small changes in method parameters
2. ✓ Ruggedness evaluates inter-laboratory variations, while robustness evaluates small changes in method parameters

3. ✖ Robustness focuses on analyst variations, while ruggedness evaluates intra-laboratory changes

4. ✖ Ruggedness focuses on temperature changes, while robustness focuses on pressure changes



Question Number : 117 Question Id : 8318969237 Question Type : MCQ Option Shuffling : Yes Display Question Number : Yes

Correct Marks : 1 Wrong Marks : 0

Which of the following is a primary standard used in the calibration of spectrophotometers?

Options :

1. ✘ Sodium dichromate
2. ✘ Sodium chloride
3. ✔ Potassium dichromate
4. ✘ Potassium chloride

Question Number : 118 Question Id : 8318969238 Question Type : MCQ Option Shuffling : Yes Display Question Number : Yes

Correct Marks : 1 Wrong Marks : 0

Find the correct sentence from the following about accuracy and precision in pharmaceutical analysis.

Options :

Accuracy refers to reproducibility, while precision refers to closeness to the true value

1. ✘

Accuracy refers to closeness to the true value, while precision refers to reproducibility

2. ✔

Both accuracy and precision refers to the same concept

3. ✘

Accuracy is related to random errors, while precision is related to systematic errors

4. ✘

Question Number : 119 Question Id : 8318969239 Question Type : MCQ Option Shuffling : Yes Display Question Number : Yes  
Correct Marks : 1 Wrong Marks : 0

Which guideline is commonly referred to for method validation in pharmaceutical analysis?

Options :

ICH Q3A

1. ✘

2. ✓ ICH Q2 (R1)

3. ✗ ICH Q1B

4. ✗ ICH Q4A

Question Number : 120 Question Id : 8318969240 Question Type : MCQ Option Shuffling : Yes Display Question Number : Yes  
Correct Marks : 1 Wrong Marks : 0

What will be change observed in liquid chromatography with increased mobile phase flow rate?

Options :

1. ✗ Decreased pressure

2. ✗ Increased resolution

3. ✗ Increased sensitivity

4. ✓ Reduced retention times

